



20 Rozel Square, St Johns Gardens, Manchester, Lancashire, M3 4FQ

Jordan Fishwick are delighted to present this TOP FLOOR penthouse duplex apartment which has been renovated to a high standard throughout in the highly popular St Johns Gardens development. Ideally situated off Deansgate, the accommodation comprises of a double bedroom with fitted wardrobes and shower room on the lower floor, stairs leading to the top floor which offers a second double bedroom, spacious living/dining room with beautiful fully fitted kitchen, with wine cooler. There is a shared balcony which overlooks the landscaped communal gardens towards Beetham Tower and Deansgate Square. Externally the property benefits from a garage with a parking space in front, and a separate store/utility room. The lease on this has apartment been extended.

Price £325,000

Viewing arrangements

Viewing strictly by appointment through the agent

245 Deansgate, Manchester, M3 4EN 0161 833 9499 opt 3

Entrance Hallway

Carpet. Doors to all ground floor rooms. Intercom system.

Master Bedroom

12'7" x 9'10"

Fitted carpet. Ceiling light. Fitted wardrobes. Radiator.

Shower Room

Tiled shower suite. Low level w/c. Sink with mixer tap. Shower cubical with rainhead shower. Heated towel rail. Window.

STAIRS TO FIRST FLOOR

Living Room

22'10" x 16'1"

Wooden flooring. Spotlights. Ceiling light. TV/Telephone point. Storage cupboard. Access to balcony. Open with kitchen.

Kitchen

15'3" x 8'0"

Updated kitchen with complimentary work tops over. Fridge and freezer. Cooker with grill and hob over. Sink with mixer tap. Wine cooler. Window.

Bedroom Two

9'1" x 8'0"

Wooden flooring. Ceiling light. Radiator.

Externally

Shared balcony with views of Deansgate Square across the communal gardens. Garage, storage/utility room and parking to the front.

Additional Information

Service Charge: £1498

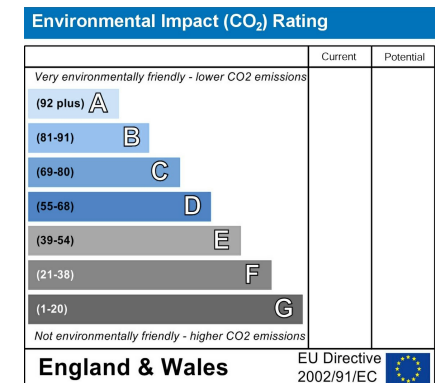
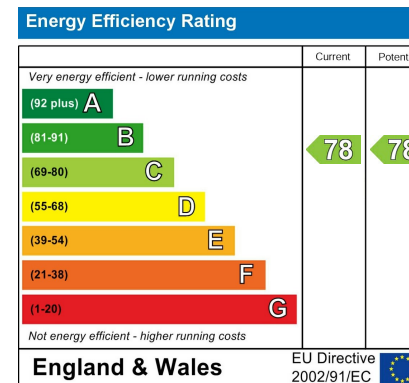
Ground Rent: Peppercorn

Lease: 150 years from 24/06/1979

Council Tax Band: D

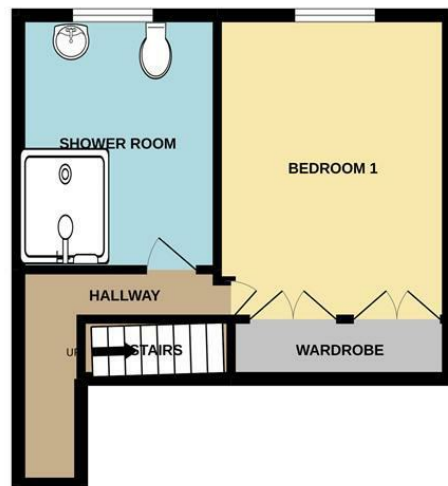
Management Company: Jacobs

Owner Occupiers Only





GROUND FLOOR



1ST FLOOR



Measurements are approximate. Not to scale. Illustrative purposes only
Made with MetroPix ©2022



These particulars are believed to be accurate but they are not guaranteed and do not form a contract. Neither Jordan Fishwick nor the vendor or lessor accept any responsibility in respect of these particulars, which are not intended to be statements or representations of fact and any intending purchaser or lessee must satisfy himself by inspection or otherwise as to the correctness of each of the statements contained in these particulars. Any floorplans on this brochure are for illustrative purposes only and are not necessarily to scale.

Offices at: Chorlton, Didsbury, Disley, Hale, Glossop, Macclesfield, Manchester Deansgate, Manchester Whitworth Street, New Mills, Sale, Wilmslow and Withington

245 Deansgate, Manchester, M3 4EN

0161 833 9499 opt 3

manchester@jordanfishwick.co.uk

www.jordanfishwick.co.uk

